

### CCCC FINAL RESULTS 2007 / 2008

DIVISION 1	C	W	H	Y	S	L	N	Points	%
Caldwell	█	½	1	0	1	1	V	3½	70
Whitmore	½	█	1	0	1	1	V	3½	70
Harper	0	0	█	1	½	1	V	2½	50
Yates	1	1	0	█	½	0	V	2½	50
Shephard	0	0	½	½	█	½	V	1½	30
Lowe	0	0	0	1	½	█	V	1½	30
Norris	V	V	V	V	V	V	█	void	

DIVISION 2	A	S	H	N	W	F	C	Points	%
Alexander	█	½	1	½	1	1	V	4	80
Smith	½	█	½	½	1	1	V	3½	70
Hulme	0	½	█	1	1	1	V	3½	70
Nye	½	½	0	█	1	1	V	3	60
Williamson	0	0	0	0	█	1	V	1	20
Fulton	0	0	0	0	0	█	V	0	0
Costello	V	V	V	V	V	V	█	void	

DIVISION 3	N	G	H	T	C	L	Points	%
Northcott	█	1	1	1	½	V	3½	88
Geddes	0	█	1	1	1	V	3	75
Hall	0	0	█	1	1	V	2	50
Thistlewood	0	0	0	█	1	V	1	25
Cleaves	½	0	0	0	█	V	½	12.5
Loxton	V	V	V	V	V	█	void	

DIVISION 4	P	Co	F	Ca	Ba	Bo	Points	%
Partridge	█	1	½	½	1	V	3	75
Couch	0	█	½	1	1	V	2½	63
Foster	½	½	█	½	½	V	2	50
Carlin	½	0	½	█	1	V	2	50
Battye	0	0	½	0	█	V	½	13
Boddy	V	V	V	V	V	█	void	

**Congratulations to  
Justin Caldwell & Steve Whitmore.  
Joint Champions 2007/2008.**

Division 1 ended with a tie between Justin Caldwell & Steve Whitmore who become the first names engraved on the new Ivor Davies Trophy. In a Division hit by the illness of two players and the death of Bert Norris, some of the other places are less representative than they might have been.

Wilf Alexander won Division 2, while Mike Smith beat David Hulme on tie break. Because of Bert Norris' death both gain promotion. Michael Williamson and Bill Fulton are relegated. I have kept Hilary Costello in this Division as his withdrawal was out of his hands.

Division 3 saw victory go to Mark Northcott ahead of a returning Gordon Geddes. I have again used discretion to leave John Loxton in this Division as his withdrawal was due to his brother's serious illness.

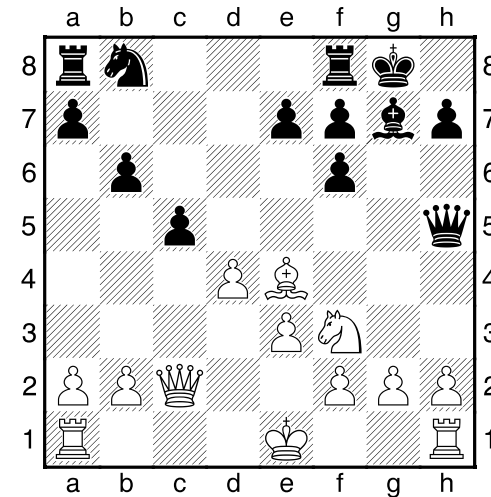
Finally, Division 4 saw Tim Partridge win from Peter Couch in what proved quite a tight Division.

The number of withdrawals this season has forced me to use some creativity in next season's Divisions. I hope no one feels hard done by as a result of this, but I can assure you that no one has been relegated from any Division who shouldn't have been!

### Hulme D. S. H. – Williamson M. [D00]

Division 2 2007 – 2008

Notes by M. Williamson with added suggestions from Fritz. **1.d4 d5 2.♗g5 ♠f6** Why snarl up Black's Kingside development? (Fritz suggests c6) **3.♗xf6 gxf6** exf6 weakens the centre but releases Bishop, whereas gxf6 strengthens the centre and allows the Bishop to be fianchettoed. Perhaps later 0-0-0. **4.e3 ♗g7 5.c4 b6** (Fritz suggests c6, whereas its comment on b6 is a definite advantage to White) **6.♠c3 ♗b7 7.♠f3 0-0** 0-0 is best. Pity if Bishop is exchanged for Knight, but it would not affect e5 and centre attack. **8.cxd5 ♗xd5 9.♠xd5 ♗xd5 10.♗d3 c5** c5 develops with Nc6 or e5, wanting dxe5 in order to straighten out the pawns. (Fritz suggests f5 or e6) **11.♗c2 ♗h5 12.♗e4** Diagram



Michael writes 'Almighty clanger – dumbol!' (Fritz suggests Nd7 followed by Bxa8 Rxa8) **12...♠c6** Nc6 Bxc6 Rc8 – Bishop moves and quite good basis for attack on c file and Bishop diagonal from King's side. **13.♗xc6 ♗ac8 14.♗a4 ♗c7 15.0-0 a6 16.dxc5 ♗xc5** not Rfc8 because cxb disturbs Rook, threatens b7 and Black loses Rook. Try Qxc5. If Rc1, Qd6. **17.♗ac1 ♗d6** If Be4, Rfc8. ... If Nd4, f5. **18.♗fd1 ♗e6 19.♠d4 ♗g4 20.♗xa6** Black is one piece down and two pieces not effective in play. Try Rfc8. **20...♗fc8 21.h3** Queen moves to h5, then Bb7 or Nb5 followed by Rxc6, Rxc6, Rxc6 or then g4 and Queen moves **21...♗h5 22.♗f3 1-0**